

# SMART-JET® DUO PRINT CONTROLLER

- Control one or two Thermal Ink Jet (TIJ) Printheads - PRO, MAX, or REACH
- 7"/17.8 cm LCD Display, Full Range of Bar Code and 2D Symbologies
- Ideal for Primary Packaging, Date Coding, Track/Trace Applications

**The Smart-Jet® DUO print controller offers the performance you need for any print application you have.**

The Smart-Jet® DUO provides the advanced print features you demand, delivering economical flexibility for your inline print applications. Utilizing maintenance-free thermal ink jet technology (TIJ), the DUO print controller, with its simple to operate LCD touch screen and intuitive operating software, delivers high resolution print for text, counters, expiration date, Julian date, shift codes, logos, and bar codes. The DUO is designed to deliver the high-quality inline printing results you require at an affordable price.



Contact your local distributor to order or to see the full line of superior quality MSSC products.



**Phone:** (618) 343.1006 **Fax:** (618) 343.1016  
926 McDonough Lake Road, Collinsville, Illinois 62234 USA

**[www.msscinc.com](http://www.msscinc.com)**

# SMART-JET® DUO Print Controller

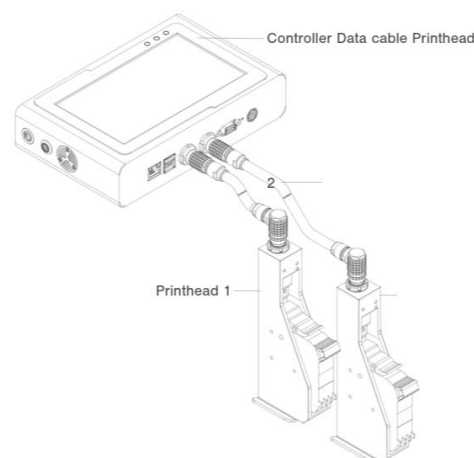
## Dynamic Print Controller for One or Two TIJ Printheads

### Features:

- One or two independent or stitched printheads
- 7"/17.8 cm LCD touch screen
- Full range of bar code symbologies, including both linear and 2D symbols
- Complete range of inks, including colors, for printing on a variety of substrates, including kraft corrugated, plastic, flexible film, glass, and coated corrugated
- Choice of fonts, including ability to import TrueType fonts
- Graphics and logos, including ability to import custom graphics and logos
- Message length up to 4.9 ft./1.5 m
- Network via Ethernet
- Import and print databases (\*.txt, \*.csv)
- Receive variable data from scales, scanners, or other devices for on-demand printing
- Offline message creation (can be imported to printer via USB)
- Selection of operating languages, including English, Spanish, France, German, Korean, and others
- Selection of print languages, including English, Chinese, Thai, Hebrew, Arabic, and others

### Specifications:

- Controller Dimensions (L x W x H):  
8.4" x 5.5" x 2.0"/214.4 mm x 138.6 mm x 49.9 mm
- Controller Weight: 4.0 lbs./1.1 kg
- Display: 7"/17.8 cm LCD touch screen
- Power Supply: AC 100V-240V, 50/60Hz, DC 24V-2.5A
- Print Resolution: Adjustable, up to 600 x 600 dpi
- Print Speed: Up to 249 ft./76 m per min at 300 x 300 dpi
- Print Density: 3 levels, user defined
- Printhead Cable Length: 6.6 ft./2 m;  
Optional Lengths: 16.4 ft./5 m; 32.8 ft./10 m
- Throw Distance: Varies with printhead type;  
up to 0.4"/10 mm with REACH Printhead

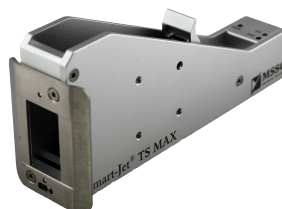


### TS PRO



- Up to 1/2"/12.7 mm print height
- Aqueous and solvent inks
- Multiple colors
- Up to 755 feet/230 m per min
- 0.2"/5 mm throw distance
- Up to 6 lines of print

### TS MAX



- Up to 1"/25.4 mm print height
- Aqueous and solvent inks
- Multiple colors
- Up to 394 ft./120 m per min
- 0.16"/4 mm throw distance
- Up to 12 lines of print

### TS REACH



- Up to 1/2"/12.7 mm print height
- Very fast drying MEK ink, available in black and red
- Up to 131 ft./40 m per min
- 0.39"/10 mm throw distance
- Up to 6 lines of print