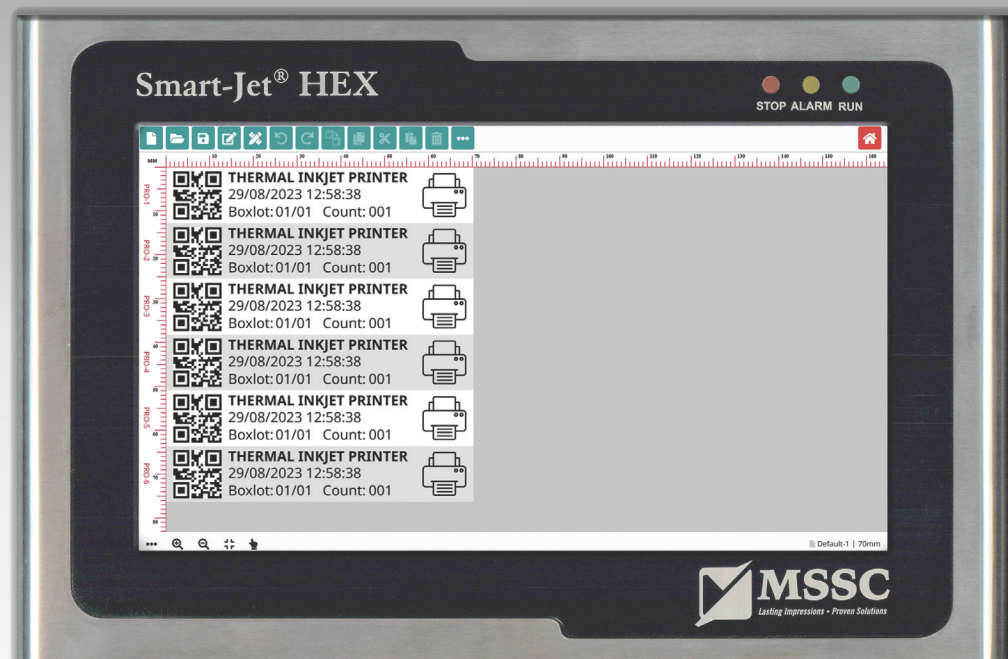


SMART-JET® HEX PRINT CONTROLLER

- Control up to Six Thermal Ink Jet (TIJ) Printheads - PRO, MAX, or REACH
- 10"/25.4 cm LCD Display, Full Range of Bar Code and 2D Symbologies
- Ideal for Case Coding, Multi-Lane Packaging, and Web Applications

The Smart-Jet® HEX print controller offers the performance you need for any print application you have.

The Smart-Jet® HEX provides the advanced print features you require, with a maximum print height of up to 6"/15.2 cm, for your most demanding inline print applications. You can print on both sides of a box – all controlled from the HEX controller's LCD touch screen. Utilizing maintenance-free thermal ink jet technology (TIJ), the HEX print controller delivers high resolution print for text, counters, expiration date, Julian date, shift codes, logos, and bar codes. The HEX is designed to deliver the high-quality inline printing results you require.



Contact your local distributor to order or to see the full line of superior quality MSSC products.



Phone: (618) 343.1006 Fax: (618) 343.1016
926 McDonough Lake Road, Collinsville, Illinois 62234 USA

www.msscinc.com

SMART-JET® HEX Print Controller

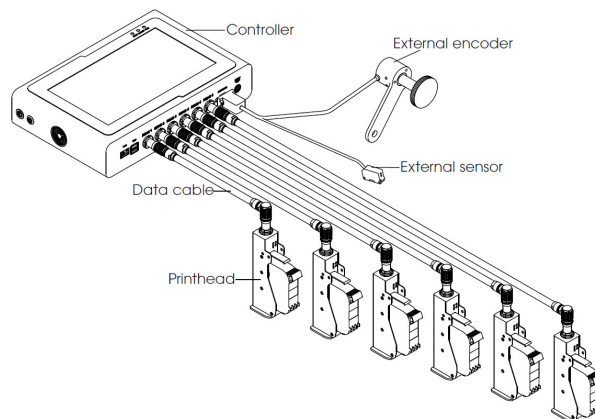
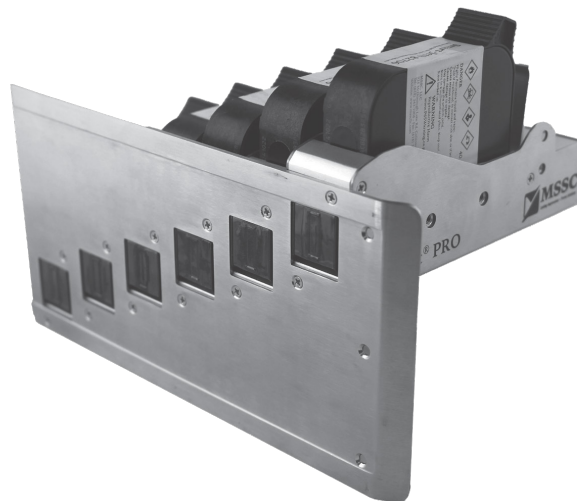
Dynamic Print Controller for Up To Six TIJ Printheads

Features:

- Choice of up to six (6) independent or stitched printheads
- 10"/25.4 cm LCD touch screen
- Full range of bar code symbologies, including both linear and 2D symbols
- Complete range of inks, including colors, for printing on a variety of substrates, including kraft corrugated, plastic, flexible film, glass, and coated corrugated
- Choice of fonts, including ability to import TrueType fonts
- Graphics and logos, including ability to import custom graphics and logos
- Message length up 4.9 ft./1.5 m
- Network via Ethernet
- Import and print databases (*.txt, *.csv)
- Receive variable data from scales, scanners, or other devices for on-demand printing
- Offline message creation (can be imported to printer via USB)
- Selection of operating languages, including English, Spanish, France, German, Korean, and others
- Selection of print languages, including English, Chinese, Thai, Hebrew, Arabic, and others

Specifications:

- Controller Dimensions (L x W x H):
12" x 8" x 2.5"/305.6 mm x 200.9 mm x 64.2 mm
- Controller Weight: 6.1 lbs./2.75 kg
- Display: 10"/25.4 cm LCD touch screen
- Power Supply: AC 100V-240V, 50/60Hz, DC 24V 9.2A
- Print Resolution: Adjustable, up to 600 x 600 dpi
- Print Speed: Up to 249 ft./76 m per min at 300 x 300 dpi
- Print Density: 3 levels, user defined
- Printhead Cable Length: 6.6 ft./2 m;
Optional Lengths: 16.4 ft./5 m; 32.8 ft./10 m
- Throw Distance: Varies with printhead type;
up to 0.4"/10 mm with REACH Printhead

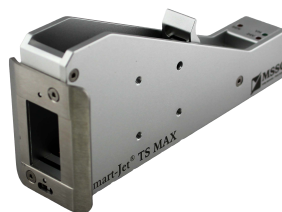


TS PRO



- Up to 1/2"/12.7 mm print height
- Aqueous and solvent inks
- Multiple colors
- Up to 755 feet/230 m per min
- 0.2"/5 mm throw distance
- Up to 6 lines of print

TS MAX



- Up to 1"/25.4 mm print height
- Aqueous and solvent inks
- Multiple colors
- Up to 394 ft./120 m per min
- 0.16"/4 mm throw distance
- Up to 12 lines of print

TS REACH



- Up to 1/2"/12.7 mm print height
- Very fast drying MEK ink, available in black and red
- Up to 131 ft./40 m per min
- 0.39"/10 mm throw distance
- Up to 6 lines of print